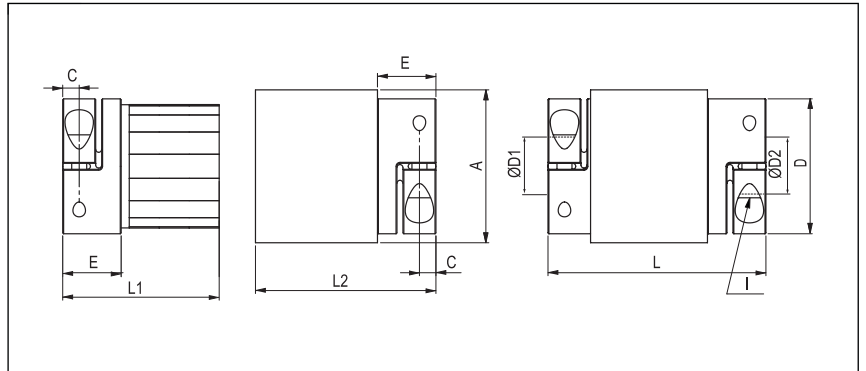


Permanent magnetic coupling  
with collet clamps

optional full  
stainless steel  
version

# PMK



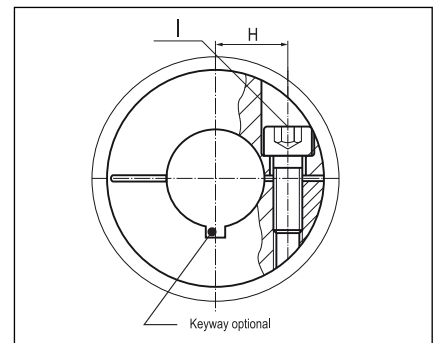
Order Code

**PMK - 18 - 16 - 20**

Type      Size      ØD1 (H7)      ØD2 (H7)

Size	Torque TKN (Nm)	Dimensions (mm)										Technical Data						
		L Length	Ø A Outer	D1/D2 Bore Size (H7) min-max	L1	L2	H	C	E	Magnet- length	Hub Ø	I Screw (ISO4762) TA (Nm)	Mass Inner- part (kg)	Mass Outer- part (kg)	Inertia Innerpart (g m <sup>2</sup> )	Inertia Outerpart (g m <sup>2</sup> )	Misalignment radial ΔKr (mm)	max speed min-1
2	1.2	55	31	3-14	39	41	9	3.5	11	20	25	M3 2	0.07	0.11	0.005	0.018	0.5	10000
4	2.5	58	38	6-18	40	42	12	5	13	20	32.5	M4 3.5	0.11	0.15	0.01	0.04	0.5	9000
10	5	58	46	6-25	39.5	41.5	15.5	5	13.5	20	40.5	M4 4.5	0.16	0.2	0.04	0.08	0.5	8000
18	9	78	51	10-25.4	53.5	58.5	17	5,5	19,5	30	45	M5 8	0.23	0.28	0.07	0.14	0.5	7000
30	13	88	56	10-32	58.5	63.5	20	7,5	24.5	30	56	M6 15	0.28	0.35	0.1	0.21	0.5	6000
60	30	107	67	12-35	73	78	23	10	29	40	66	M8 40	0.53	0.7	0.3	0.6	0.5	5000
150	60	130	84	12-44	91.5	93.5	28	11	33.5	50	82	M10 84	0.9	1.5	1.1	1.3	0.4	4000

<b>Material</b>	Clamping hub: aluminium Magnetic media: stainless steel
<b>Keyway</b>	optional acc. DIN 6885
<b>Range of temperature</b>	-30 °C ~ 100 °C



<b>Characteristics</b>	<p>wear-free</p> <p>maintenance-free</p> <p>The coupling consists of 2 separated halves; the bearing has to be provided by the customer</p> <p>Infinitely variable torque adjustable by immersion depth</p> <p>In case of overload the power transmission will be separated from the inner and outer part (by slightly jerking)</p>
------------------------	---